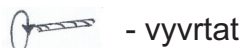


## Označení dílů

**M** - fotoleptané kovové díly

? - volba



## Parts labelling

**M** - photoetched parts

? - option



**Poznámka** - pro čiré zasklení je možné folii v oknech po vlepění umýt štětcem navlhčeným vodou

**Notice** - you can wash foil in windows by water moistened brush for pellucid windows

## Návod ke stavbě

Při stavbě postupujte podle instruktážních obrázků.

## Instructions

Follow the instruction drawings the assembly.

**Upozornění:** Během opracování může vznikat prach, který může dráždit dýchací cesty. Používejte ochranu očí při odšťihování kovových dílů.

**Notice:** Machining can produce dust which can be irritating to the respiratory tract. Metal parts should be cut off using protection eyesight.

Buy direct on

**plusmodel**  
www.plusmodel.cz

**MODELCHOICE.NET**  
ORDER & BUY DIRECTLY FROM MANUFACTURERS

Plus Model s.r.o  
Jižní 56, 370 10 České Budějovice  
Czech Republic  
<http://www.plusmodel.cz>  
e-mail: [plusmodel@plusmodel.cz](mailto:plusmodel@plusmodel.cz)

534

**plusmodel**

1/35

# BRITISH TRUCK WOT 3 TRUCTOR



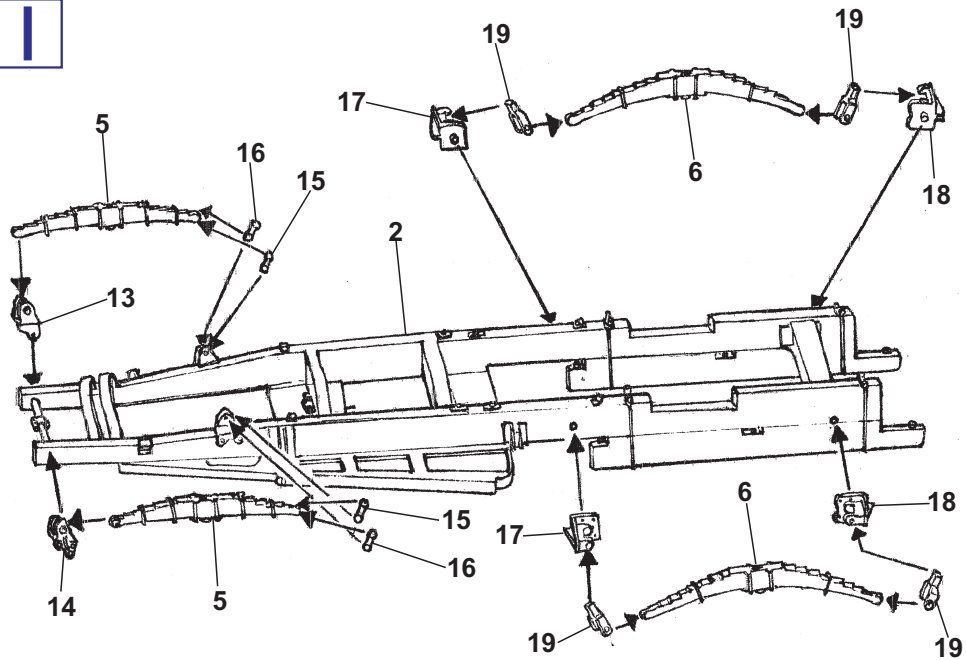
## Historie

Mezi lety 1939 až 1944 se ve Velké Británii vyráběl nákladní automobil Ford WOT 3. Zkrácením šasi, přidáním přídavné převodovky a instalací větších kol vznikl tahač Ford WOT 3 Tractor. Automobil si zachoval původní osmiválcový motor o výkonu 63 kW a bohužel také mechanické brzdy na všech kolech. Automobil sloužil ve všech složkách armády ale nejvíce jich bylo použito u Royal Air Force.

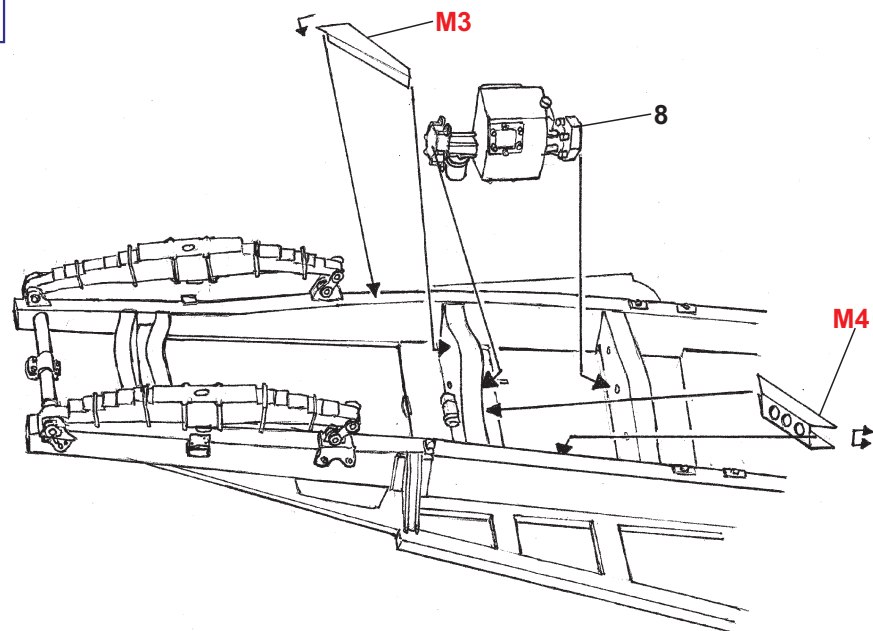
## History

Between 1939 and 1944, the Ford WOT 3 truck was produced in Great Britain. The Ford WOT 3 Tractor tractor was created by shortening the chassis, adding an additional gearbox and installing larger wheels. The car has retained the original eight-cylinder engine with an output of 63 kW and unfortunately also mechanical brakes on all wheels. The car served in all units of the army, but most of them were used by the Royal Air Force.

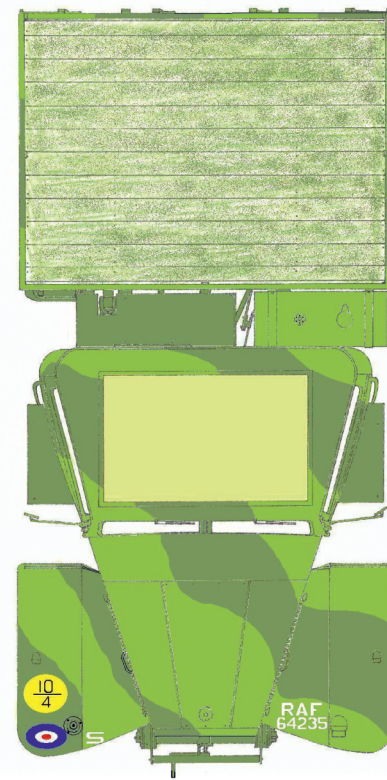
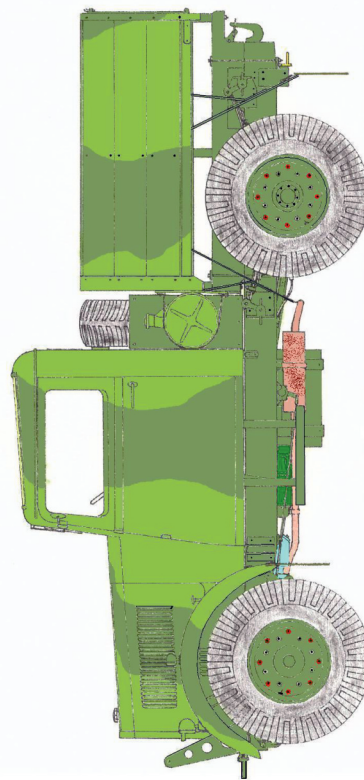
I



II

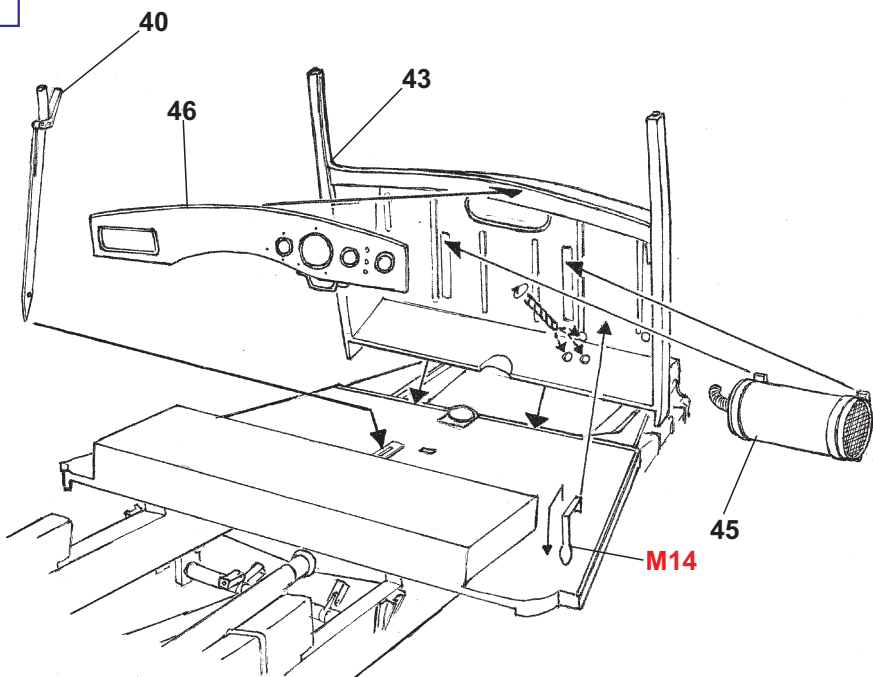
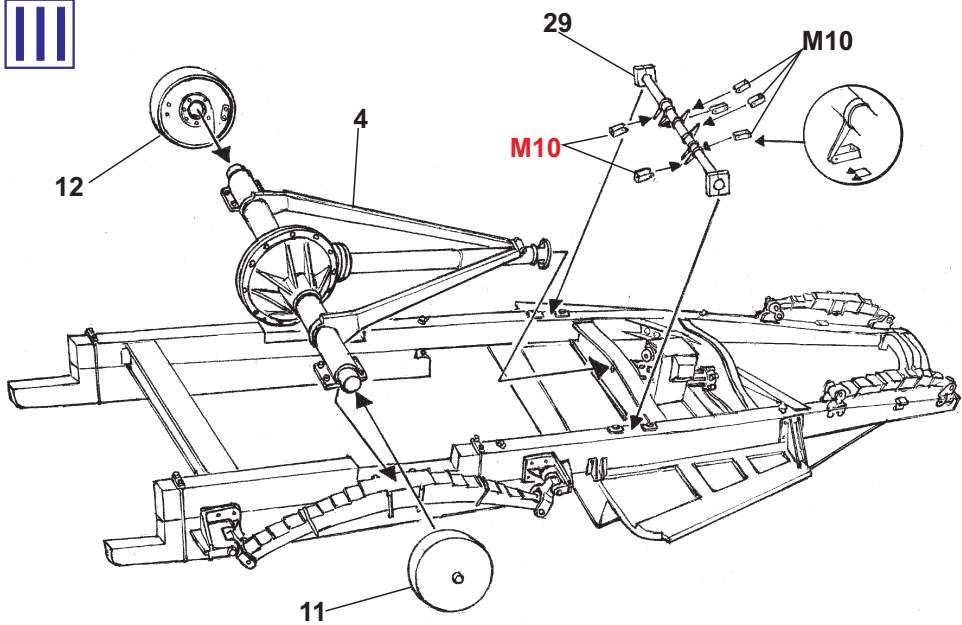


### WOT-3 Tractor, RAF WW2

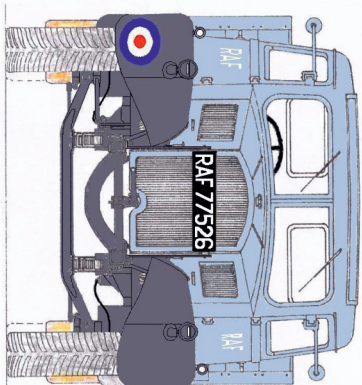
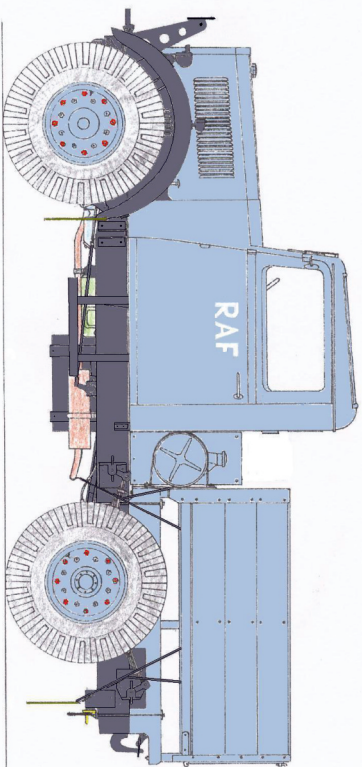


 - oliv color  
 - light teal

Kreslil: M.Klouček



### WOT-3 Tractor, RAF 1946



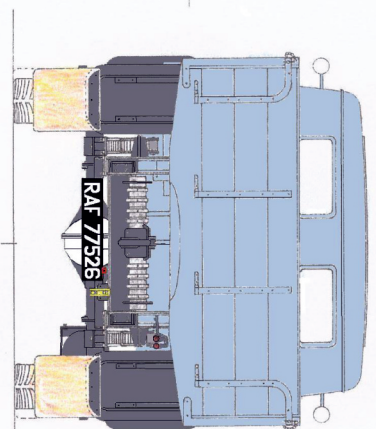
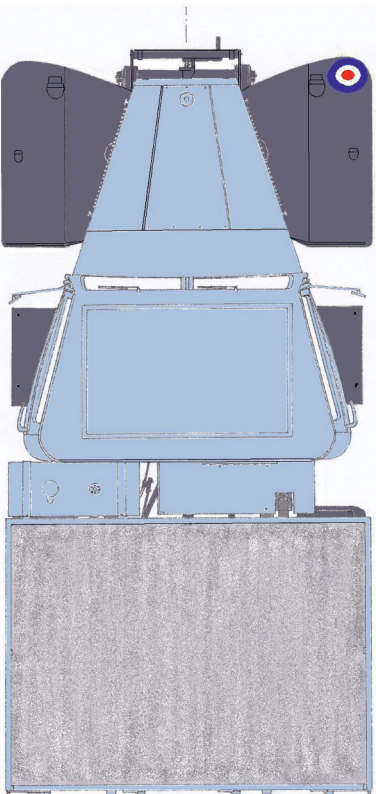
Kreslil: M. Klouček

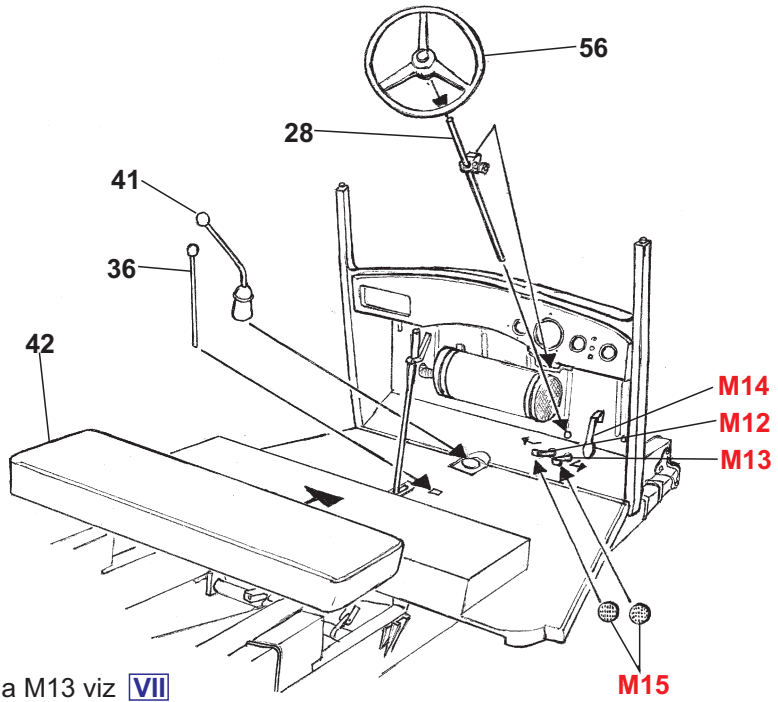


- Black-Grey

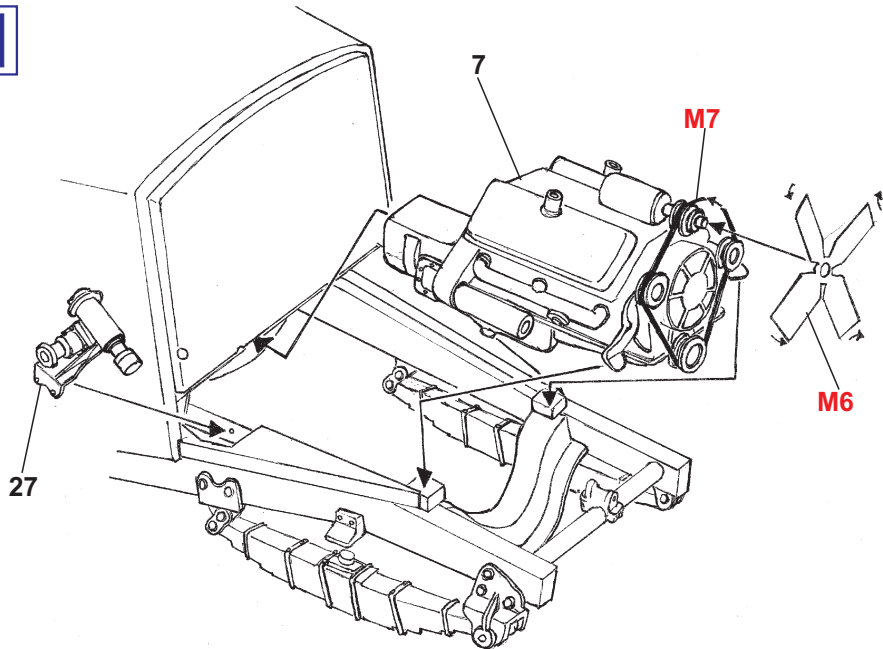
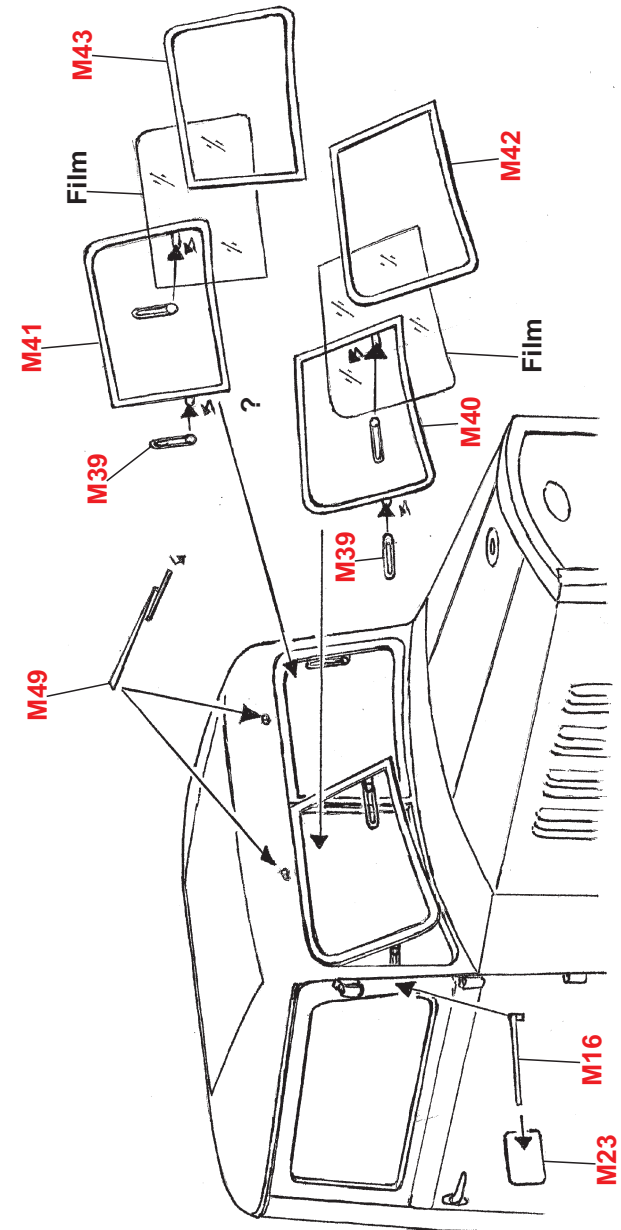


- RAF blue

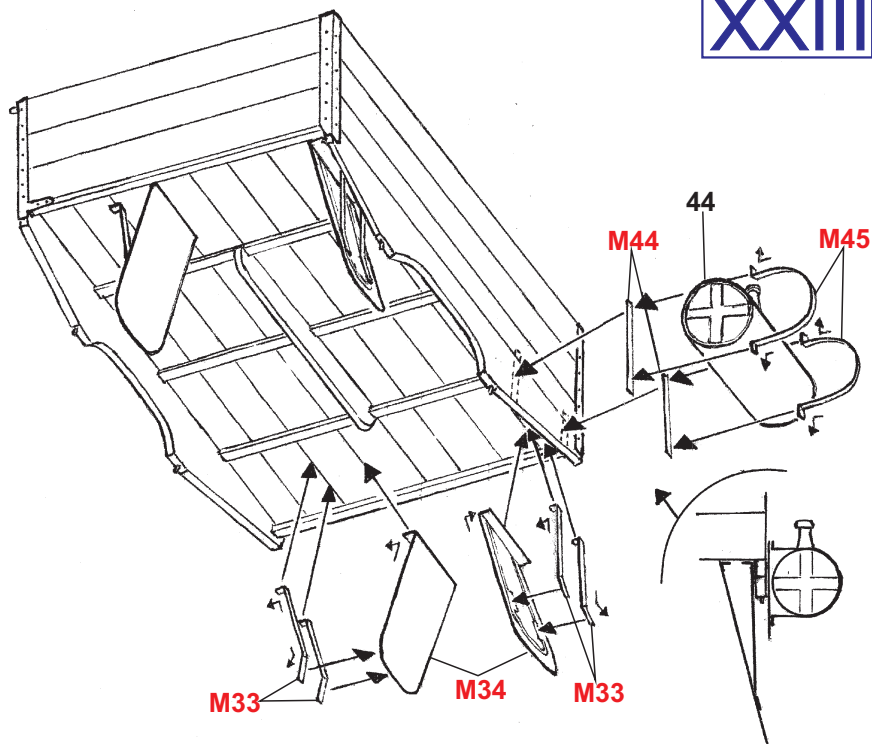


**V**

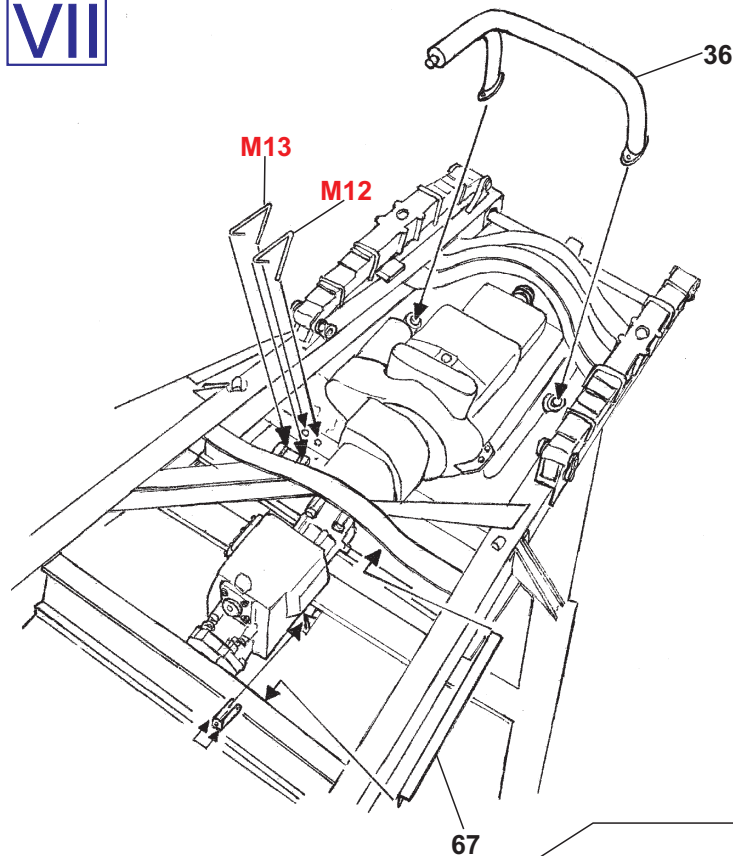
Pro díly M12 a M13 viz **VII**  
 For parts M12 and M13 see **VII**

**VI****XXV**

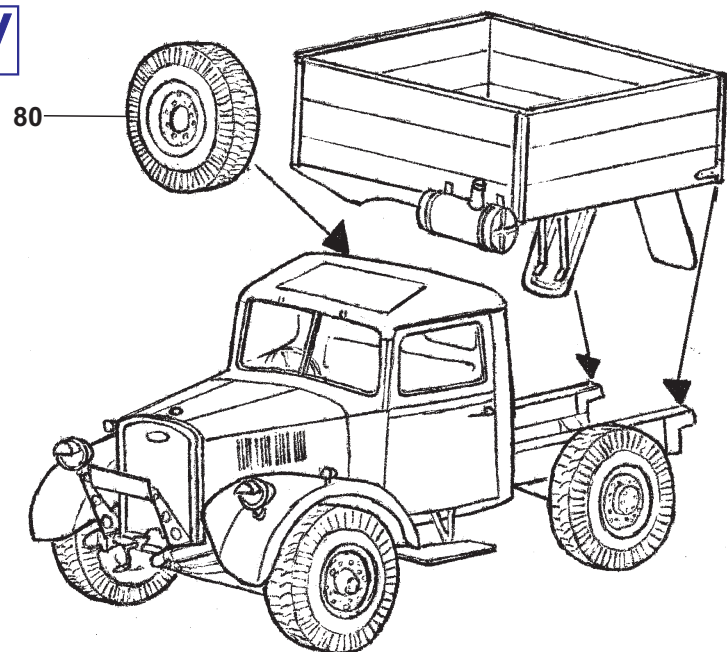
# XXIII



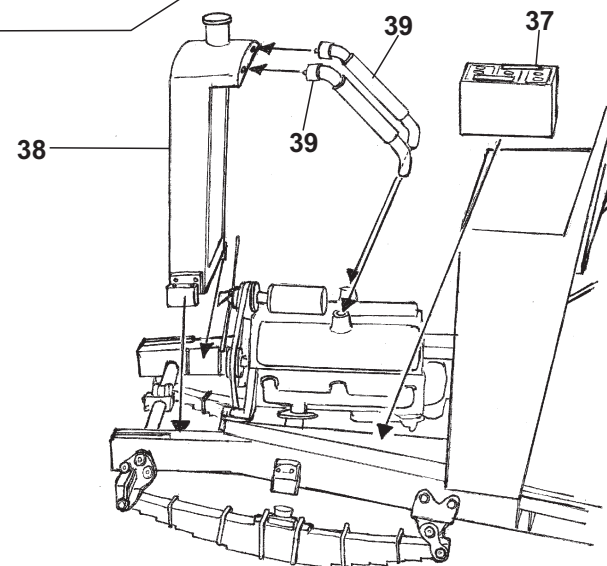
# VII



# XXIV

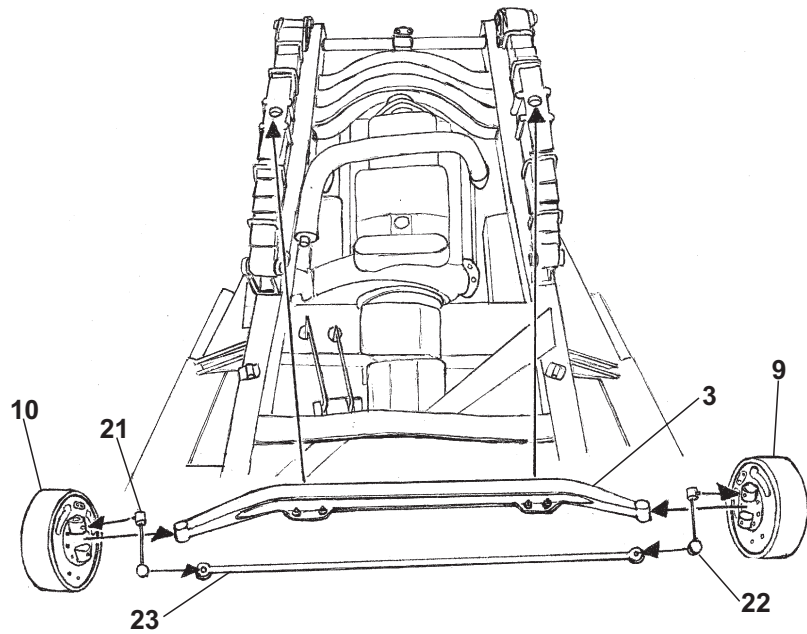


# VIII

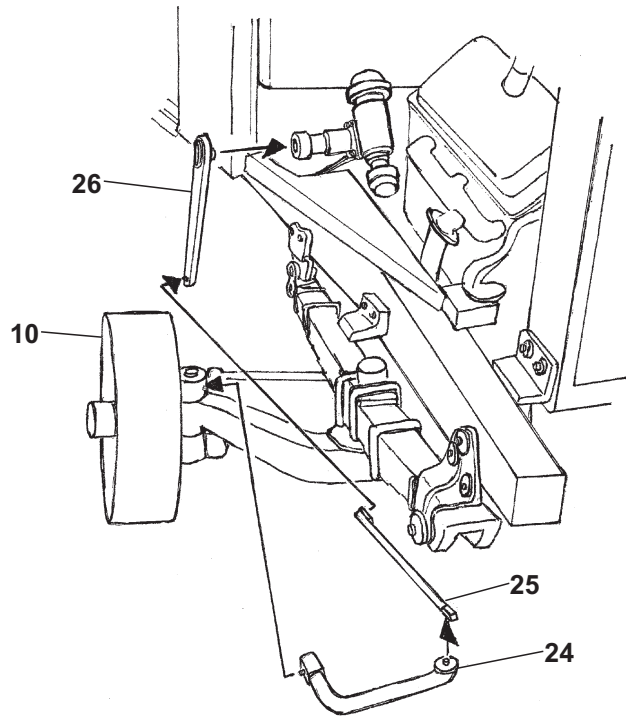


IX

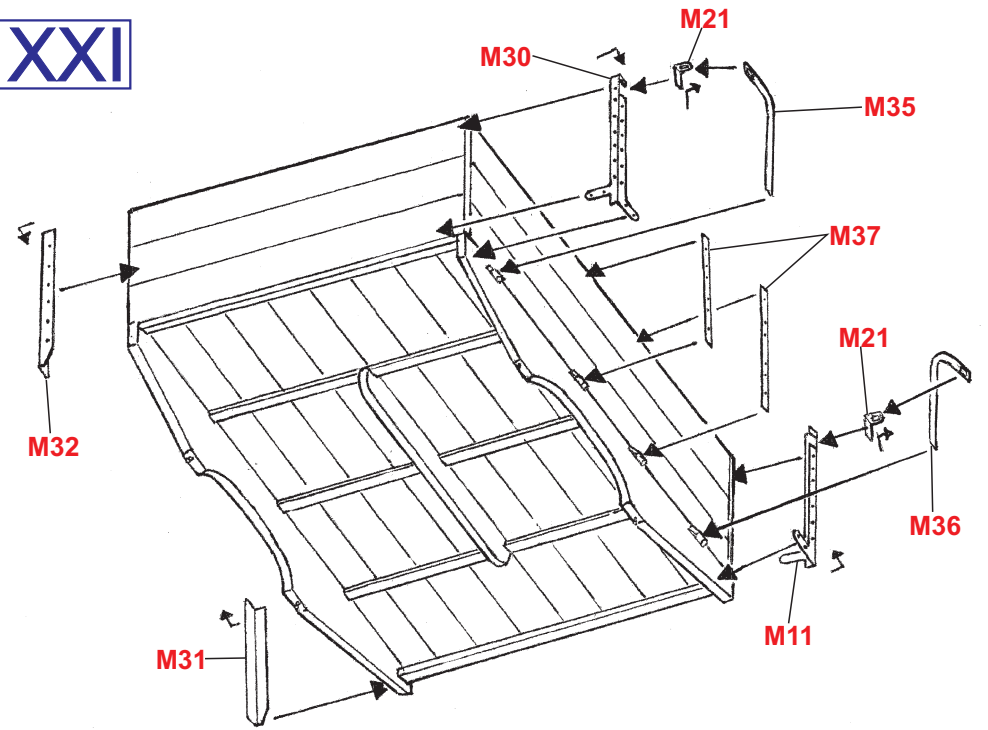
FWD



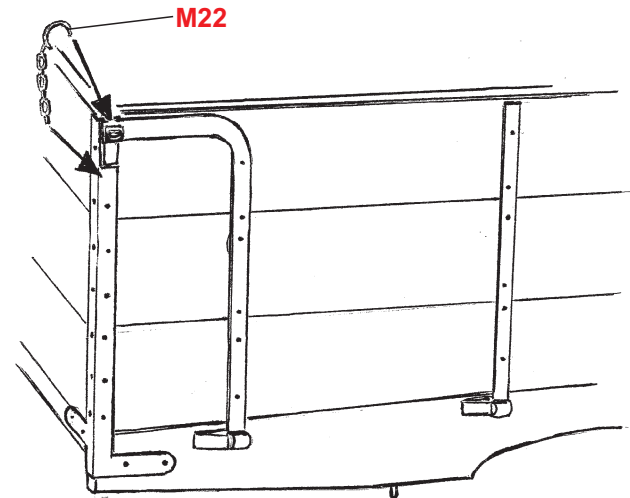
X



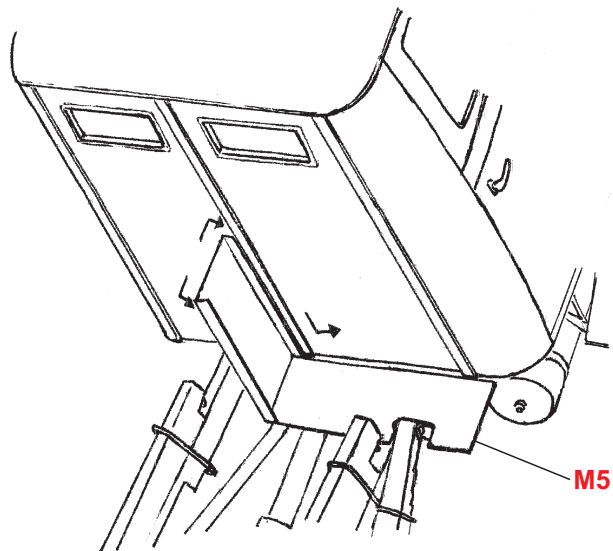
XXI



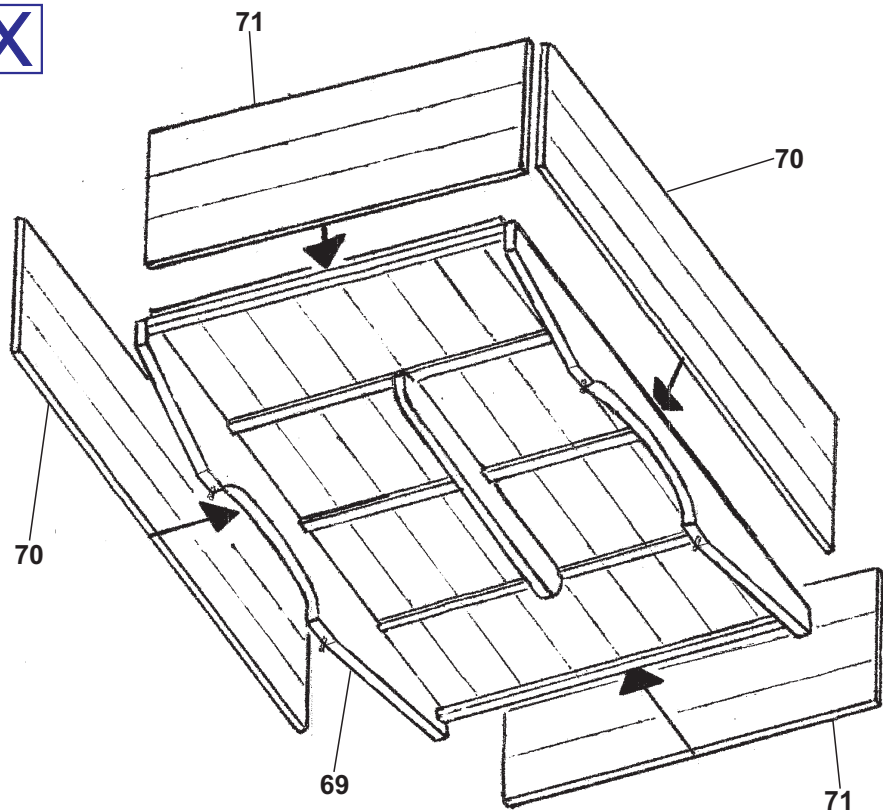
XXII



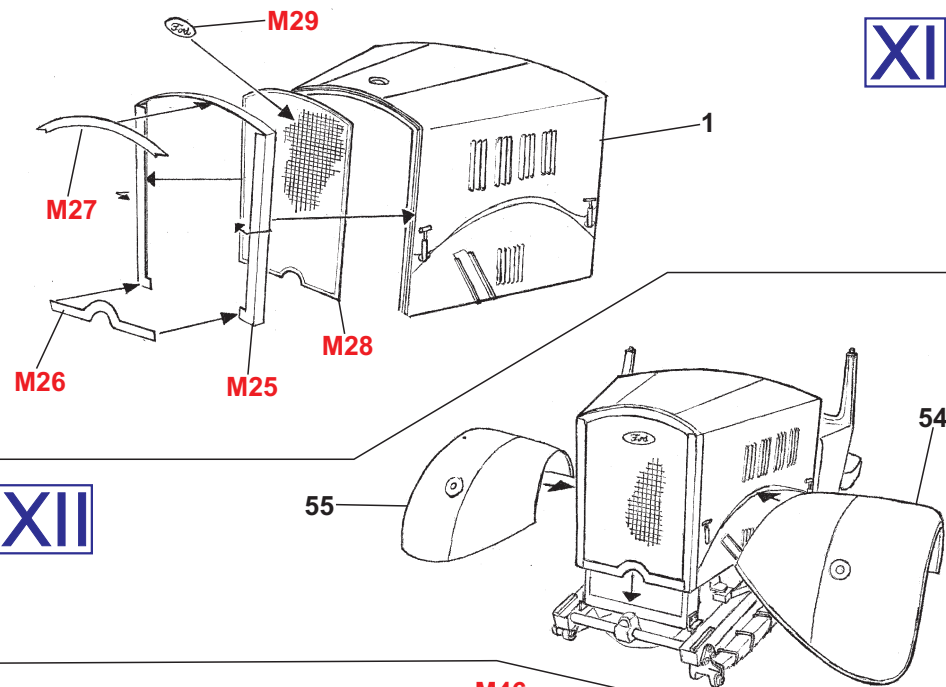
**XIX**



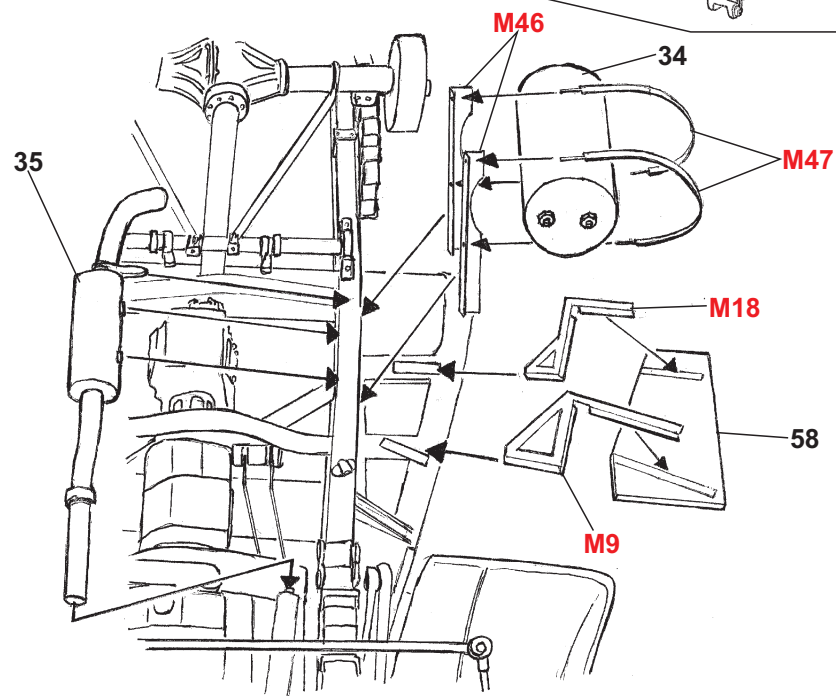
**XX**



**XI**



**XII**

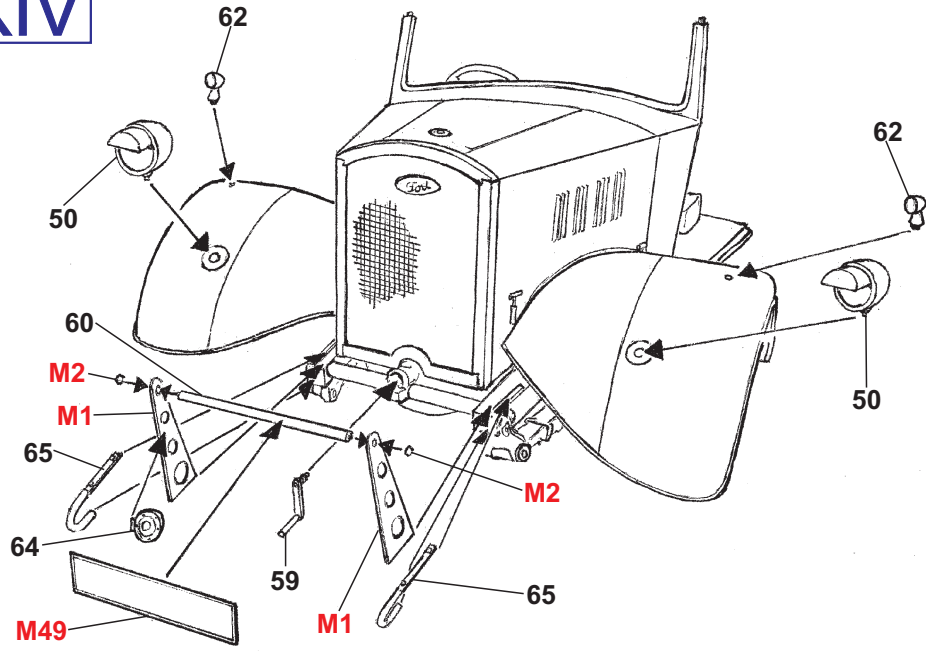


**XIII**

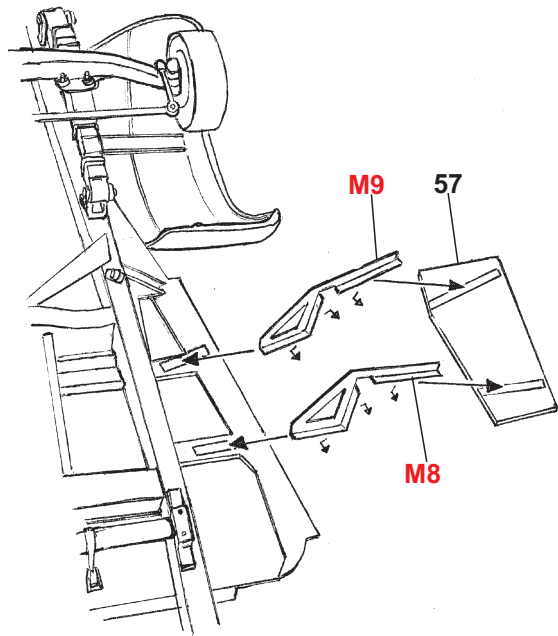


**FWD**

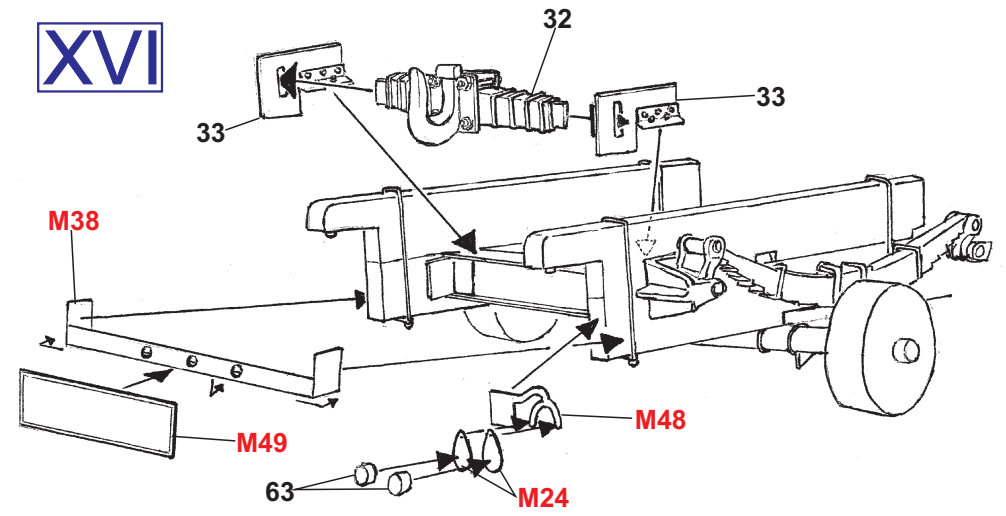
# XIV



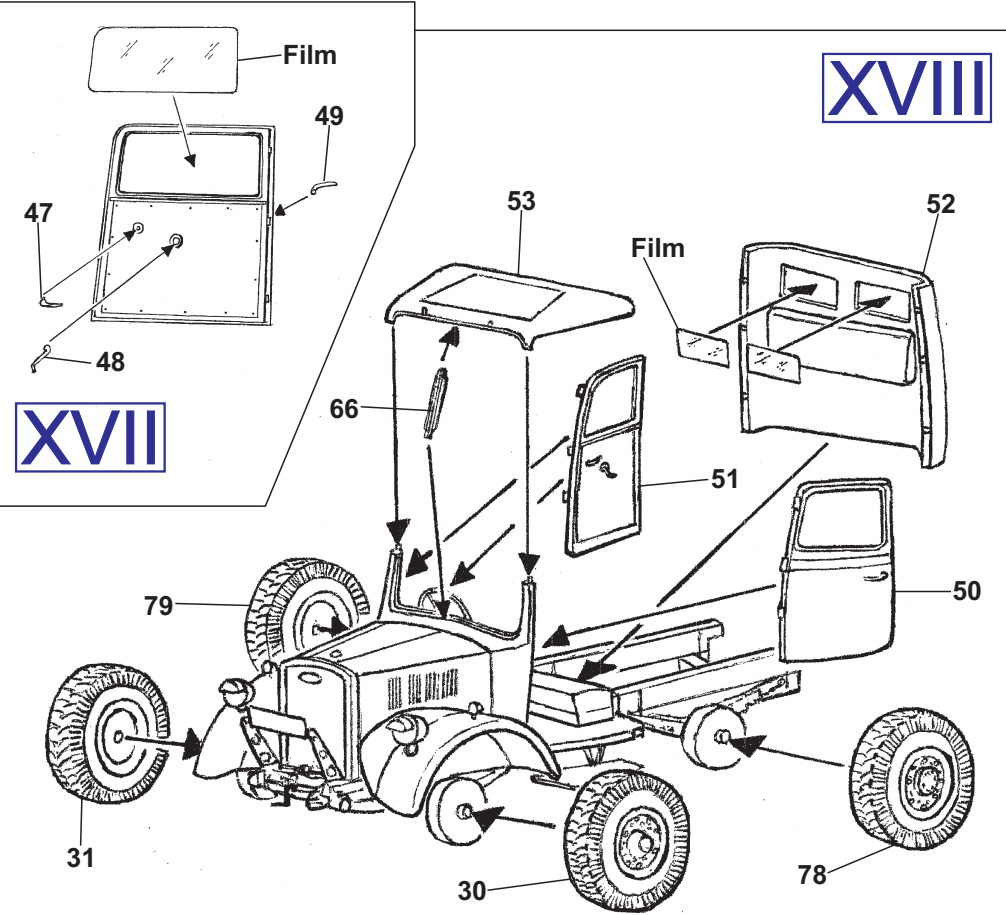
# XV



# XVI



# XVIII



# XVII